



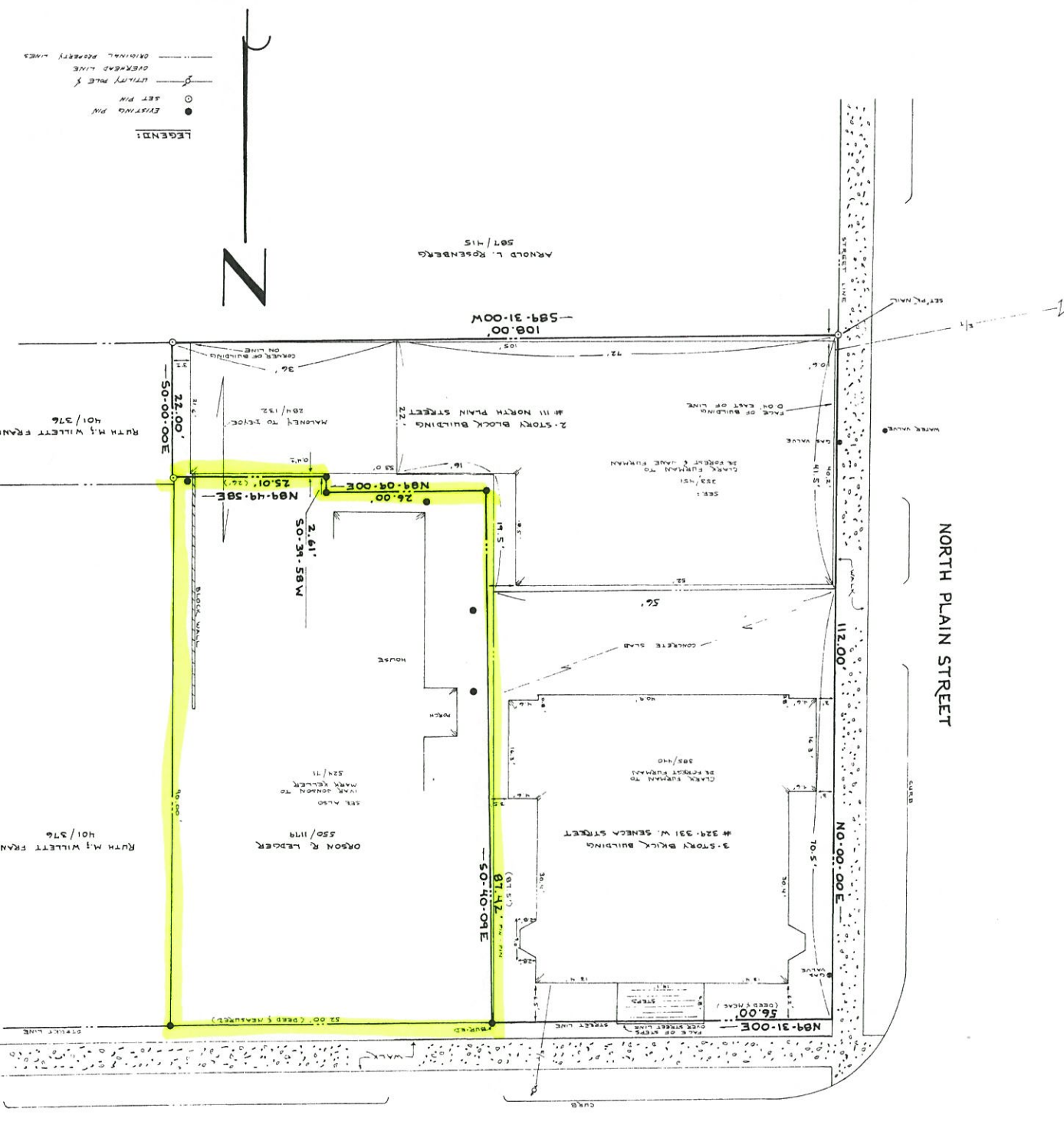
DATE: 12/1/83
 DRAWN BY: P. SCHLICHT
 SCALE: 1" = 10'
 JOB NO. 83-318
 SHEETS: 11/83

NOTE: ALL MEASUREMENTS TO THIS MAP ARE IN FEET AND INCHES.
 AS BEING THE CITY OF NEW YORK'S OFFICIAL RECORD.

HEREBY CERTIFY THAT I AM A LICENSED LAND SURVEYOR, NEW YORK STATE LICENSE NO. 04190, AND THAT THIS MAP CORRECTLY REPRESENTS AN ACTUAL SURVEY ON THE GROUND MADE BY ME OR UNDER MY DIRECT SUPERVISION, THAT IT WAS PREPARED IN ACCORDANCE WITH THE CURRENT CODE OF PRACTICE FOR LAND SURVEYS ADOPTED BY THE NEW YORK STATE ASSOCIATION OF PROFESSIONAL LAND SURVEYORS, AND THAT I FOUND NO VISIBLE ENCROACHMENTS OTHER THAN AS SHOWN HEREON.

SIGNED: [Signature] DATED: 12/1/83

TAX PARCEL # 11-2-1 & 11-2-20
 STATE OF NEW YORK
 COUNTY OF TOMPKINS
 CITY OF ITHACA
 # 111 NORTH PLAIN STREET
 # 329-331 WEST SENECA STREET



LEGEND:
 ● EXISTING PIN
 ○ SET PIN
 ⚡ UTILITY MALE &
 — OVERHEAD LINE
 --- ORIGINAL PROPERTY LINES



WEST SENECA STREET

FILED
 DEC 23 4 17 PM '83
 TOWN OF ITHACA
 CLERK'S OFFICE

VAULT BOX 1
 SLOT C-2