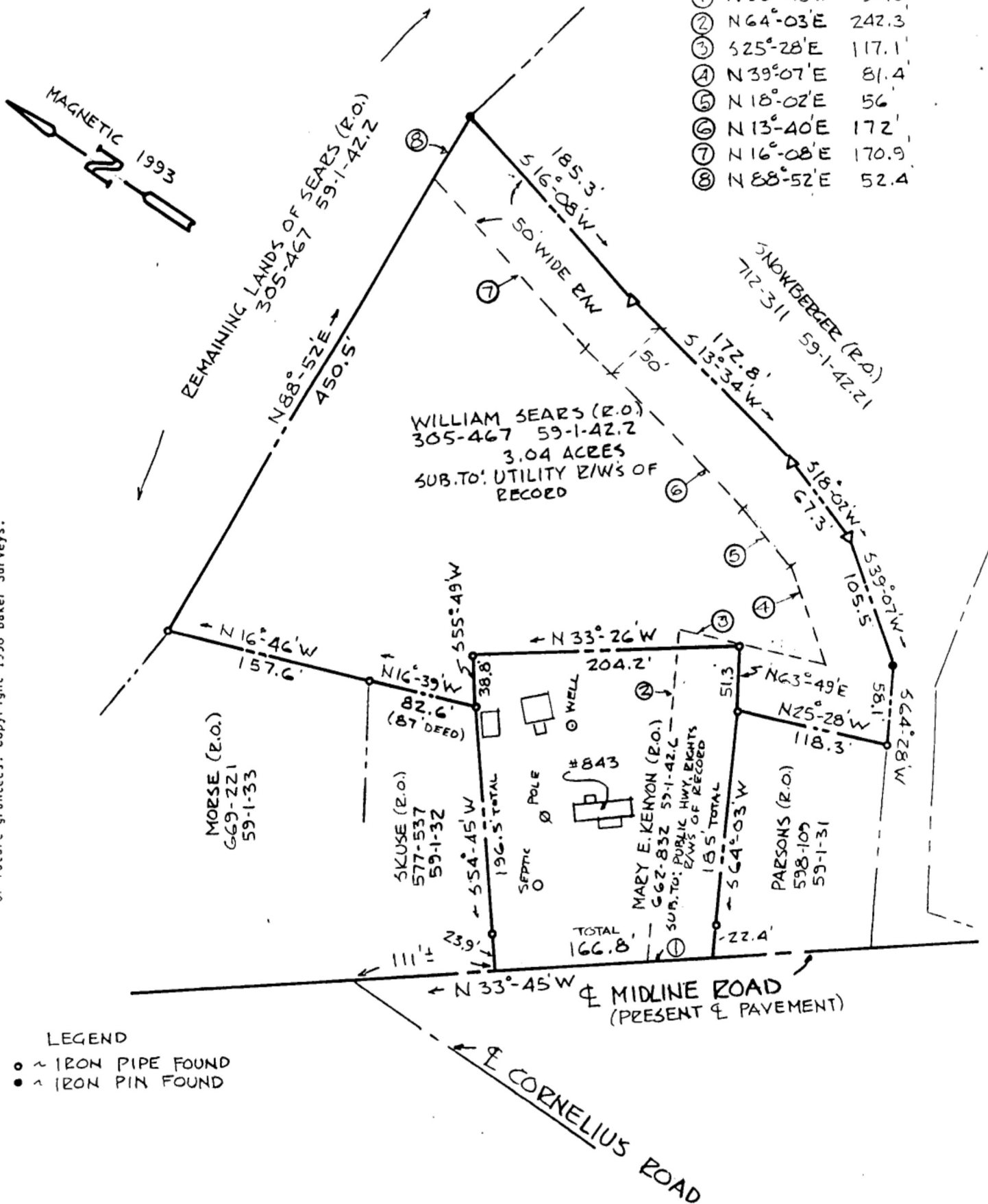


COURSES & DISTANCES FOR 50' R/W

①	N 33°-45' W	50.5
②	N 64°-03' E	242.3
③	S 25°-28' E	117.1
④	N 39°-07' E	81.4
⑤	N 18°-02' E	56
⑥	N 13°-40' E	172
⑦	N 16°-08' E	170.9
⑧	N 88°-52' E	52.4

This Map may not be used in connection with a "Survey Affidavit" or similar document, statement or mechanism to obtain title insurance for any subsequent or future grantees. Copyright 1998 Baker Surveys.



Survey Map of 843 Midline Road - Town of Dryden - Lot 66
Tompkins County - New York